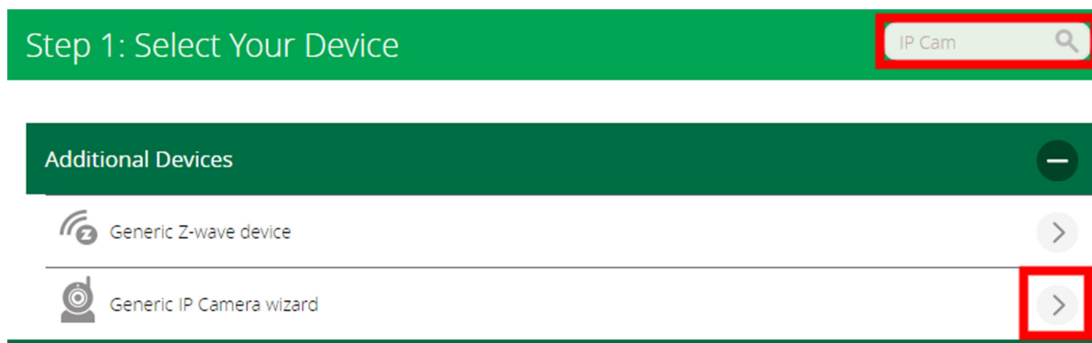


HiWatch IP Camera Set-up

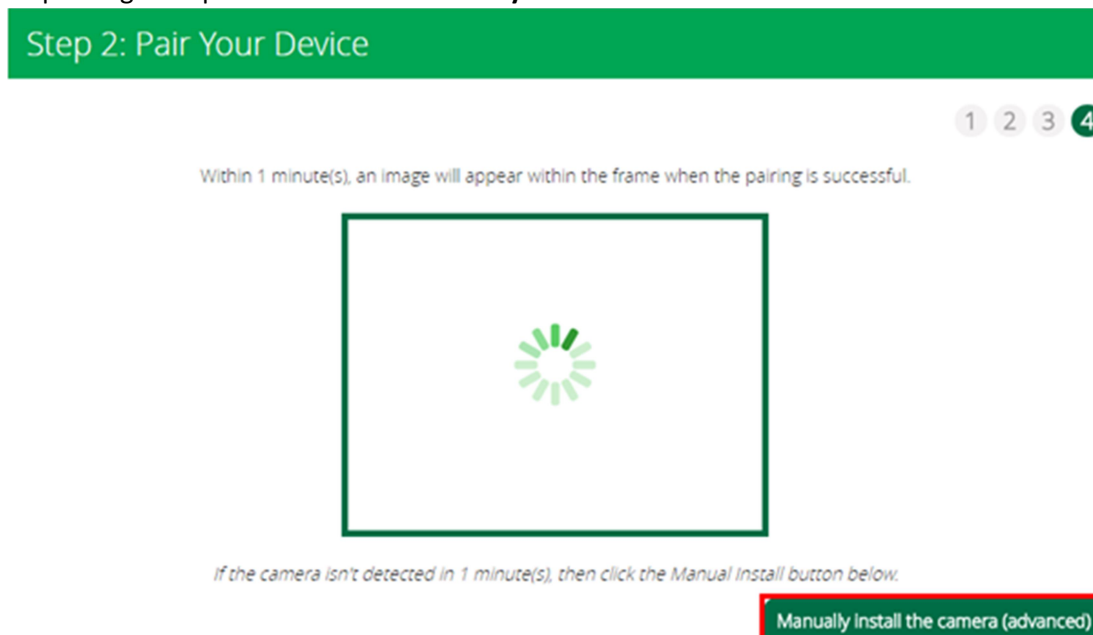
1. Set cameras positioning, this can be done by removing the cover from the camera using a screw driver and then adjusting the cameras angle to suit your needs. *(Ensure the cover is back in place before beginning step 2)*
2. Install the SADPTool software that comes with the Camera on the disk onto your computer.
3. Connect your camera to a power supply and your router via an Ethernet cable, the camera also supports PoE *(Power over Ethernet)*.
4. Load up the SADPTool software and select your camera from the list, you will need to activate the camera and you will be prompted to create a password for the device.
5. Once set-up has been complete you will be able to access your camera via the IP that has been assigned to the device, if you selected DHCP upon set-up you will need to access your router via a web browser and locate the section of your router that shows connected devices to find the IP.

VERA Integration (UI7)

1. Open up your Vera UI and selected **devices** and go to **add devices**, enter 'IP Cam' into the search bar then scroll down and select **Generic IP Camera wizard**.



2. Skip thought steps 1-3 and select **Manually install the camera**.



3. Tick the manual configuration box to the left of the Refresh list at the bottom of the page and you should see this screen, simply put in the details for the camera including username and password and press test camera at the bottom of the page, once the camera has been confirmed you can name the device.

If the camera is not in the list 'click here' for manual configuration.

Refresh list

Manual Configuration

Select camera type*

Other IP camera

You are no longer required to fill in the IP address just paste the full URL which returns a JPG file/snapshot in the box below. Example: `http://192.168.8.200/snapshot.cgi`

Camera URL*

`http://*IP*/Streaming/channels/1/Picture`

Camera IP Address*

Camera Username

Camera Password

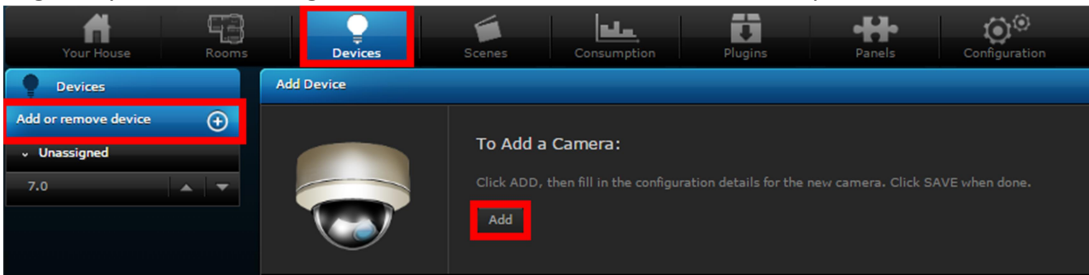
4. Access your cameras web interface via its IP in your web browser, log-in with your credentials and go to the **Configuration Tab**.
5. Press the Video/Audio button on the left hand side and change Steam Type to **Sub-stream**, you should see the following screen, and make sure that all your settings match the following for the best quality image.

	Video	ROI	Display Info. on Stream
Stream Type	Sub-stream		
Video Type	Video Stream		
Resolution	640*360		
Bitrate Type	Constant		
Video Quality	Low		
Frame Rate	20		fps
Max. Bitrate	2048		Kbps
Video Encoding	MJPEG		
I Frame Interval	20		

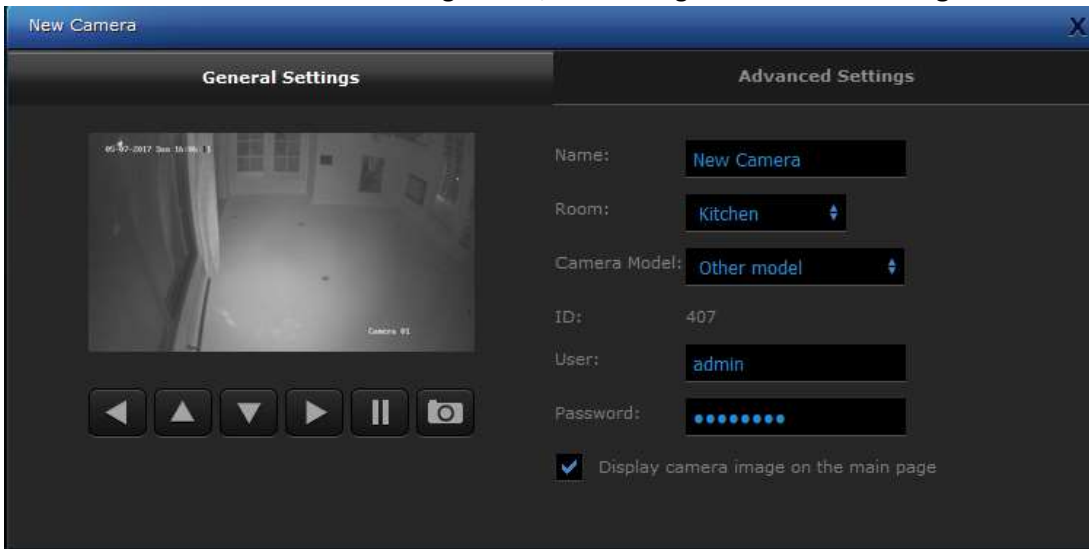
Save

Fibaro HC2 Integration

1. Login to your Fibaro HC2 go to devices and select add devices, then press add next to Camera.



2. Enter device details into the following screen, after that go to **advanced settings**.



3. Enter the IP address into the first field, then enter the following information into JPG and MJPG Streaming/channels/2/Picture
Then save your settings by pressing the save icon on the right hand side of the screen

